



High-spin hygienic barrier washer-extractors

IB700 - IB900 - IB1100 - IB1400 - IB1800

Features

- Freestanding, high spin
- Stainless steel cabinet
- Stainless steel drum and tub
- MICRO - new graphic display with almost unlimited possibilities as:
 - communication interface enabling remote service
 - multilingual microprocessor
 - freely programmable
- Oversized frame, bearings and drum
- Large door opening for easy loading and unloading
- Large drain valve (Ø126mm)
- Easy access to all parts
- Frequency controlled motor
- Perforated lifting ribs: more mechanical action, lower water consumption
- Standard Y-pocket (3 pockets) drum on IB1100, IB1400, IB1800
- Standard Pullmann (2 pockets) drum on IB700, IB900
- Eco-friendly washing programs - significantly reduces water and electricity consumption
- Soap dispenser with 5 removable compartments (10 compartments on IB1800)
- Automatic door positioning



Options

- Liquid soap pumps
- Built-in two chambers water recovery system
- Drum with 2 pockets on IB1100, with 3 pockets on IB700, IB900
- Tap to take water samples
- Light and sound signalization of end of washer cycle
- Second display
- Horizontal door



HYGIENIC
SOLUTION



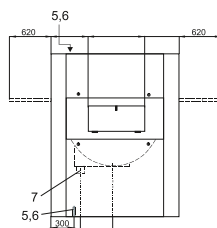
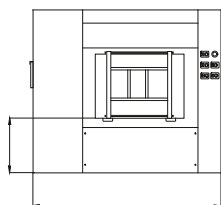
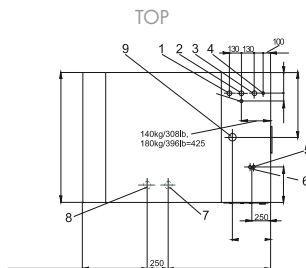
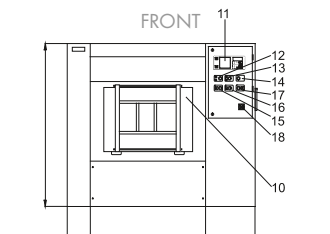
LARGE DOOR
OPENING



STAINLESS STEEL
IDENTITY

	IB700	IB900	IB1100	IB1400	IB1800
Drum					
Capacity 10:1	70 kg	90 kg	110 kg	140 kg	180 kg
Capacity 9:1	78 kg	100 kg	122 kg	156 kg	200 kg
Volume	700 l	900 l	1100 l	1400 l	1800 l
Diameter	1000 mm	1000 mm	1100 mm	1200 mm	1300 mm
Pockets	standard 2 optional 3	standard 2 optional 3	standard 3 optional 2	standard 3	standard 3
Motor					
Frequency controlled	standard	standard	standard	standard	standard
Drum speed					
Wash speed	36 rpm	36 rpm	35 rpm	33 rpm	36 rpm
Spin speed	800 rpm	800 rpm	754 rpm	720 rpm	695 rpm
G-factor	360	360	350	350	350
Heating					
Electrical additional heating	54/72 kW	54/72 kW	72/96 kW	72/96 kW	-
Steam heating	6-8 bar	6-8 bar	6-8 bar	6-8 bar	6-8 bar
Electrical connection	3 x 380-480V 50/60Hz - 3 x 200-240V 50/60Hz				
Inlet					
Water inlet	3 x 1,5" + 1 x 3/4"	3 x 1,5" + 1 x 3/4"	3 x 1,5" + 1 x 3/4"	3 x 1,5" + 1 x 3/4"	3 x 1,5" + 1 x 1"
Steam inlet	1"	1"	1"	1"	1"
Compressed air inlet	Ø 10 mm	Ø 10 mm	Ø 10 mm	Ø 10 mm	Ø 10 mm
Drain	Ø 126 mm	Ø 126 mm	Ø 126 mm	Ø 126 mm	Ø 126 mm
Transport data					
Gross weight	2760 kg	2970 kg	3150 kg	3760 kg	5310 kg
Net weight	2600 kg	2810 kg	2990 kg	3550 kg	4990 kg
Dimensions HxWxD	1805x2025x1615 mm	1805x2275x1615 mm	1855x2325x1615 mm	2075x2435x1805 mm	2165x2585x1905 mm
Packing dimensions HxWxD	1985x2100x1740 mm	1985x2355x1740 mm	1985x2400x1740 mm	2250x2485x1940 mm	2265x2665x2040 mm
Volume	7,3 m ³	8,1 m ³	8,7 m ³	10,8 m ³	12,3 m ³
Water consumption					
Cold and hot water per cycle*	783 + 196 l	966 + 242 l	1179 + 296 l	1379 + 346 l	2250 + 0 l

* Tested in accordance of EN 604 56 norm. The data concerning dimensions of machines include all extended parts.



- 1 Hard cold water inlet
- 2 Soft cold water inlet
- 3 Hot water inlet
- 4 Steam inlet
- 5 Supply of pressure air
- 6 Power supply
- 7 Main drainage valve
- 8 Recycling drainage valve
- 9 Venting of the machine
- 10 Door of loading (dirty side)
- 11 Programmer
- 12 Change-over switch
- 13 Signal of machine running (+ operating air pressure)
- 14 Central stop
- 15 Button of door unlocking
- 16 Button of drum positioning
- 17 Button of door locking
- 18 Main switch