



High spin hygienic barrier washer-extractors

IB265 - IB332 - IB442 - IB663

Features

- Stainless steel body and grey painted side legs
- Freestanding, high spin
- Oversized frame, bearings and drum
- Large drain valve (2xØ76 mm)
- Easy access to all parts
- Frequency controlled motor
- Large door opening for easy loading and unloading.
- MICRO - new graphic display with almost unlimited possibilities as:
 - Communication interface enabling remote service
 - Multilingual microprocessor
 - Freely programmable
- Perforated lifting ribs: better washing results, lower water consumption
- Eco-friendly washing programs - significantly reduces water and electricity consumption
- Patented soap dispenser with 5 removable compartments

Options

- Stainless steel side legs
- Liquid soap pumps
- Linen weighing and waterconsumption optimization system
- Aries Assist



HYGIENIC
SOLUTION



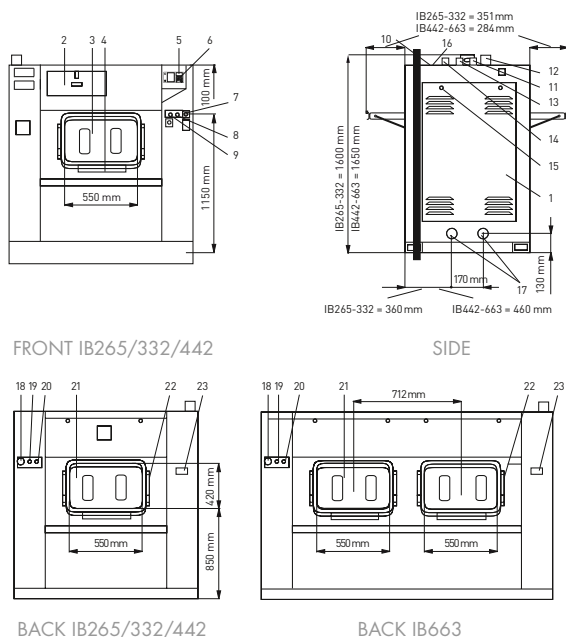
LARGE DOOR
OPENING



EASY
OPERATION

	IB265	IB332	IB442	IB663
Drum				
Capacity 10:1	26 kg	33 kg	44 kg	66 kg
Capacity 9:1	29 kg	37 kg	49 kg	74 kg
Volume	265 l	332 l	442 l	663 l
Diameter	650 mm	650 mm	750 mm	2 x 750 mm
Number of drums	1	1	1	2
Number of loading doors	1	1	1	2
Number of unloading doors	1	1	1	2
Drum speed				
Washing speed	45 rpm	45 rpm	41 rpm	41 rpm
Highest spin speed	960 rpm	960 rpm	915 rpm	915 rpm
G-factor	335	335	350	350
Programmer				
Micro - microprocessor	standard			
Cabinet				
Stainless steel	optional			
Heating				
Electrical	24 kW	36 kW	45 kW	54 kW
Steam	3-8 bar	3-8 bar	3-8 bar	3-8 bar
Connections				
Electrical	3 x 200-240V 50/60Hz - 3 x 380-480V 50/60Hz			
Water inlet	25 mm (1")			
Steam inlet	19 mm (3/4")			
Transport data				
Gross weight	1070 kg	1090 kg	1280 kg	1510 kg
Net weight	960 kg	1000 kg	1140 kg	1360 kg
Dimensions HxWxD	1600x1410x1060 mm	1600x1560x1060 mm	1650x1610x1170 mm	1650x2160x1170 mm
Packing dimensions HxWxD	1840x1465x1175 mm	1840x1610x1175 mm	1840x1660x1380 mm	1840x2200x1380 mm
Water consumption				
Cold and hot water per cycle*	276 + 69 l	364 + 91 l	467 + 117 l	785 + 195 l

* Tested in accordance of EN 604 56 norm. The data concerning dimensions of machines include all extended parts.



- 1 Service panel
- 2 Powder tank
- 3 Loading door
- 4 Door handle
- 5 Display
- 6 Keyboard
- 7 Main switch
- 8 Button to unlock the door
- 9 Button for the door position
- 10 Inlet for liquid soap
- 11 Inlet for warm water
- 12 Drum ventilation
- 13 Inlet for hard cold water
- 14 Inlet for soft cold water
- 15 Lock service panel
- 16 Steam supply (version with steam heating)
- 17 Drain (2xØ76mm)
- 18 Emergency button
- 19 Button to unlock the door
- 20 Button for the door position
- 21 Unloading door
- 22 Consolidation of the door
- 23 Net plate